



2.1. Risk Assessment Components 5

2.2. University Risk Assessment Team 5

2.3. Risk Assessment Methodology..... 5

 2.3.1 Asset Identification..... 7

 2.3.2 Threat / Hazard Characterization 8

 2.3.3 Threat / Hazard Assessment 9

 2.3.4 Vulnerability Assessment 9

 2.3.5 Failure Impact..... 9

 2.3.6 Risk Ranking..... 10

 2.3.7 Countermeasure Assessment..... 10

2.4 Maintenance 11

SECTION 3 – Prevention 11

 3.1 Prevention Programs 11

 3.1.1 EHS & Risk Management 11

 3.1.2 Lamar University Police Department..... 11

 3.1.3 Student Health Center 11

SECTION 4 – Mitigation 12

 4.1. Mitigation Activities 12



Section 1

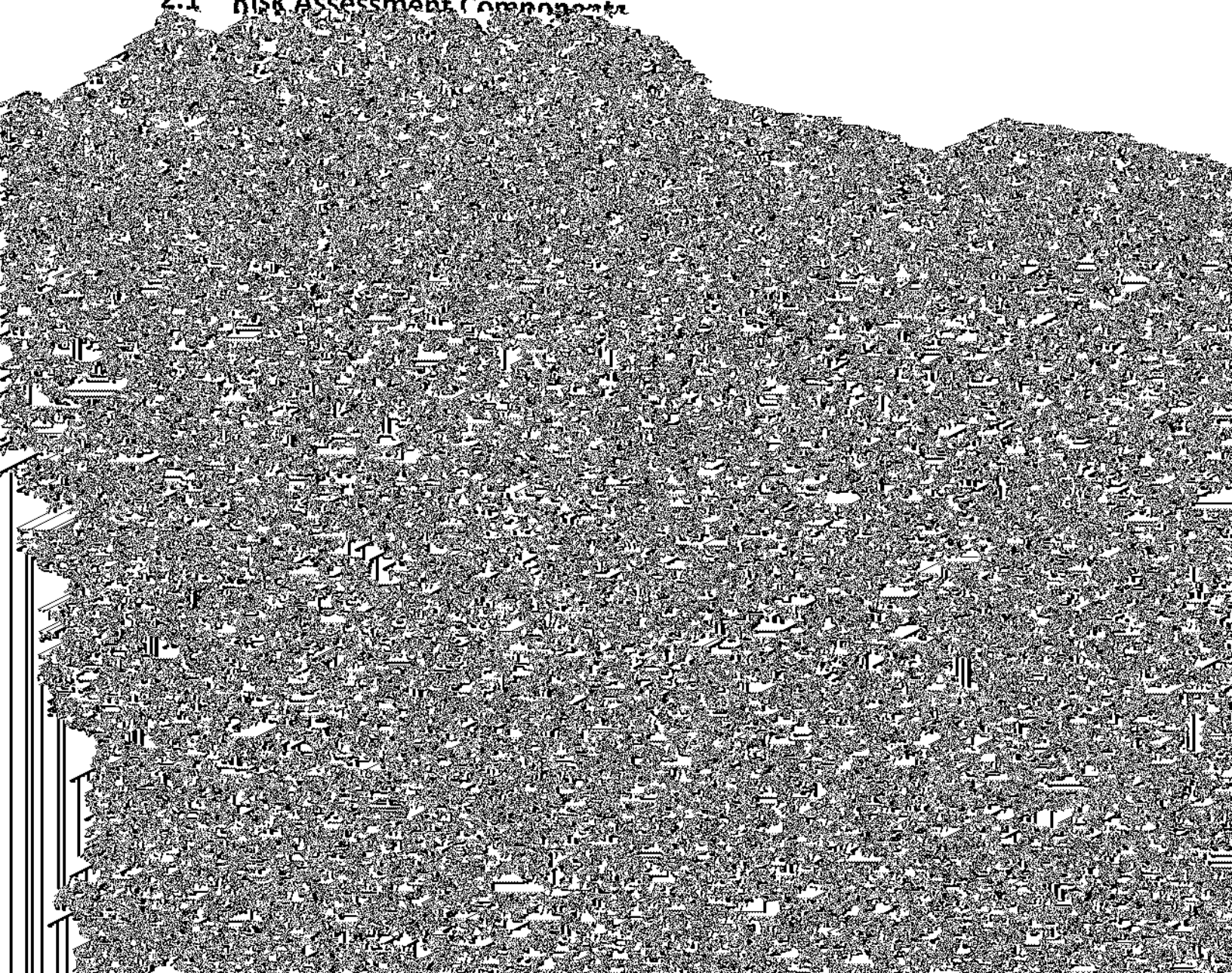
Prevention – Mitigation Introduction

As part of Lamar University's Comprehensive Emergency Management Plan (CEMP), a prevention – mitigation program has been established to decrease the likelihood that an event or crisis will occur and to eliminate or reduce the loss of life and property damage related to an event or crisis. In order to drive prevention and mitigation activities, a Risk Assessment of Lamar University's assets has been developed and maintained.

Section 2

Risk Assessment

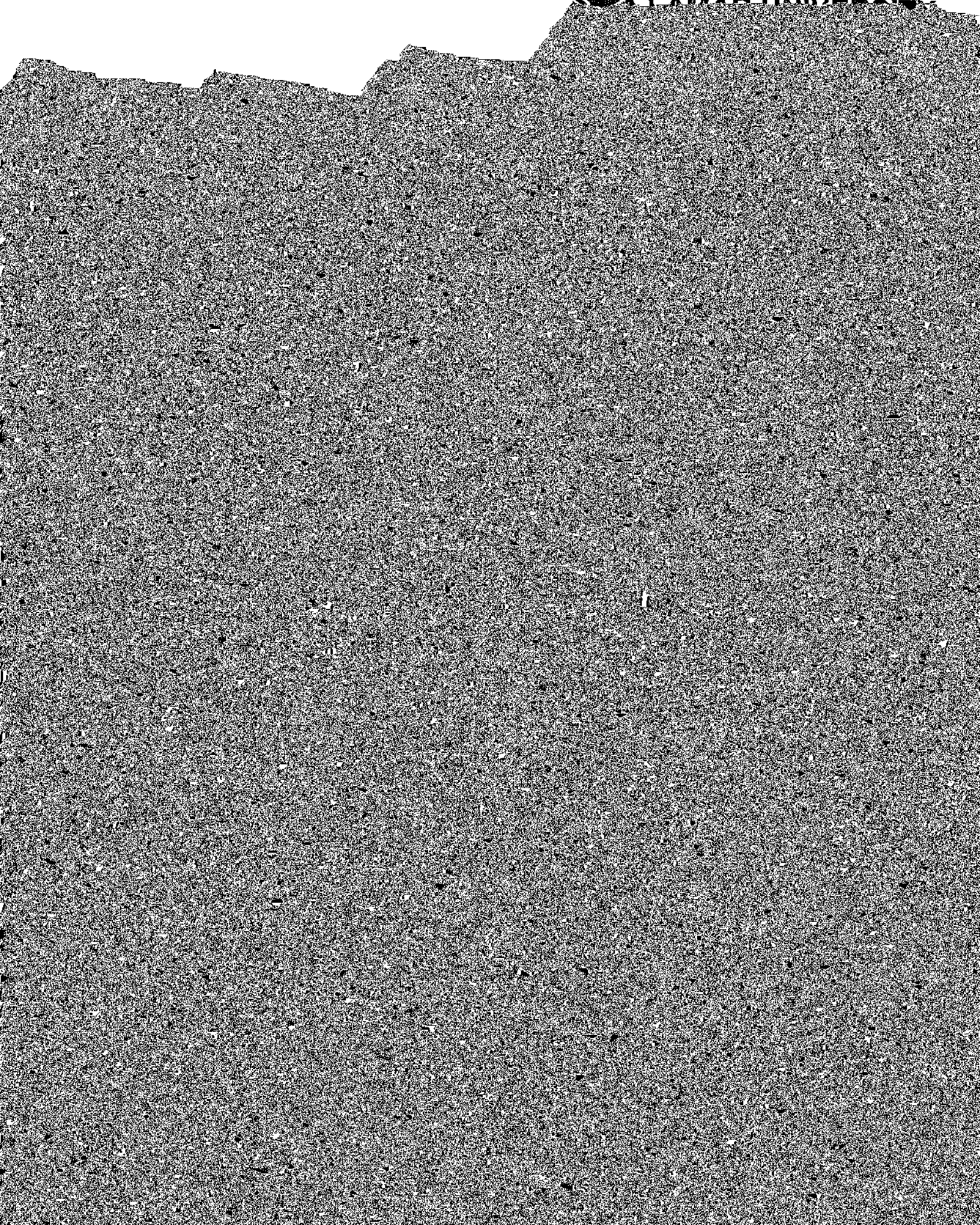
2.1 Risk Assessment Components

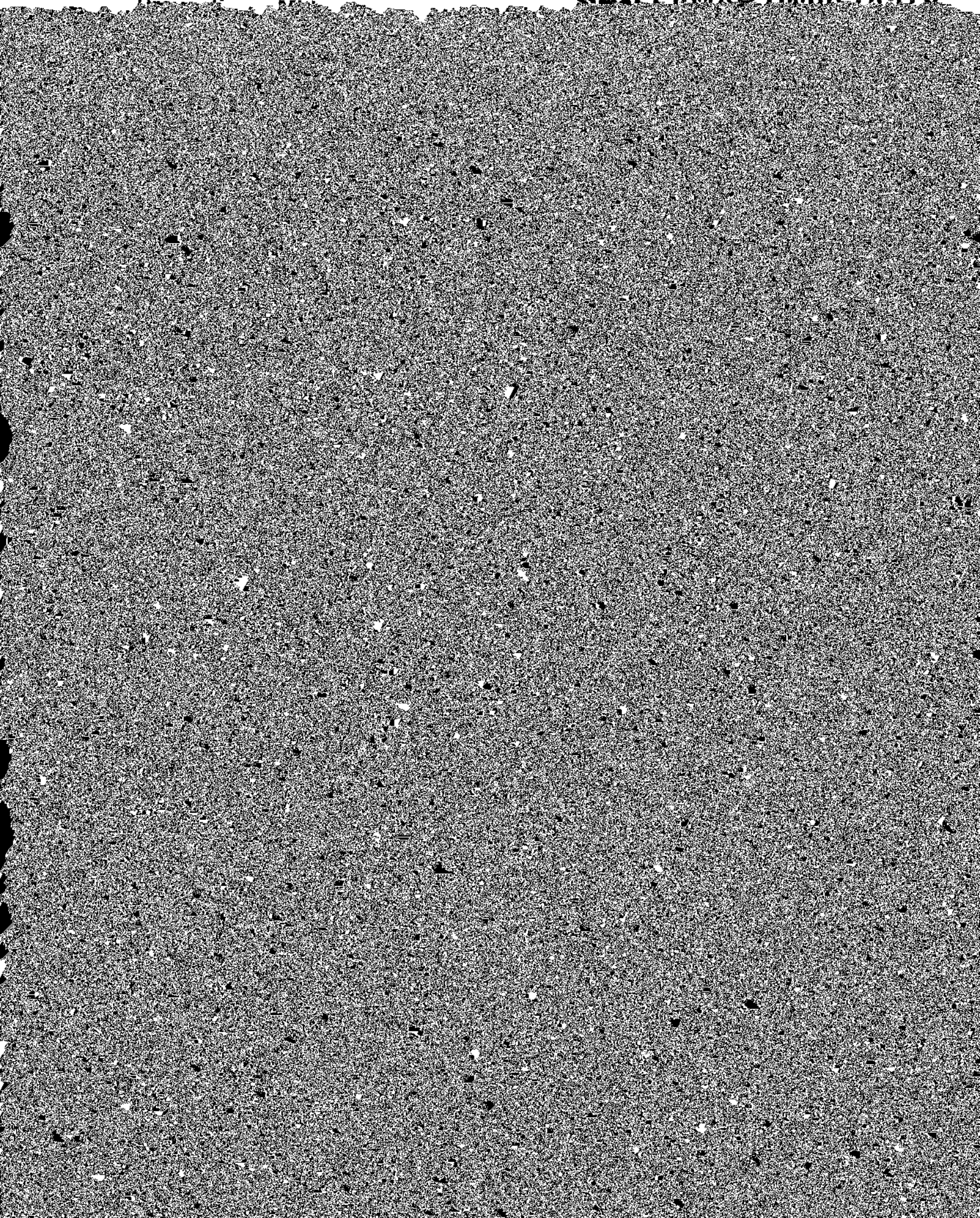


Negligible consequences or impact without long term asset effects


No consequences

0





- Risk Transference

- 
- Recommendations from EHS & Risk Management
 - Benchmarking with peer institutions
 - Input from Lamar University Executive Operations Team and Incident Management Team
 - Guidance from governmental agencies